

Customer :

customer

Customer part :

customer part

Comment :

Comment

S1=4.72

S2=5.25

Tmax=466

Tp S2=505.0

PI=0.47

HI=109

Sample =1689.10

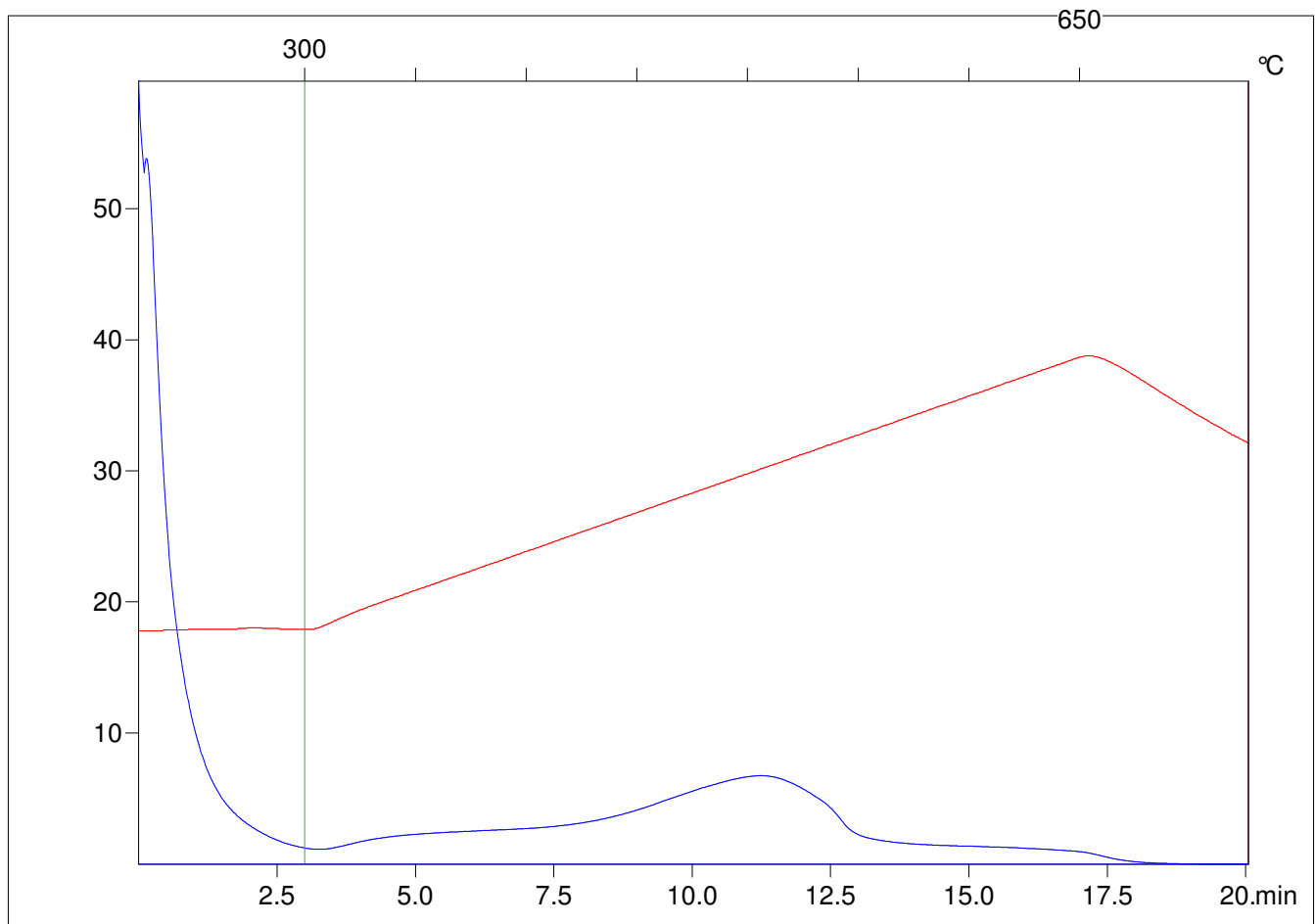
Method =Bulk Rock

Cycle=Basic

KFID(10*9)=1444

Qty =70.4

TOC=4.81



C:\VINC\PK1_1792\PK056.R00 : FID pyrolysis graphic

State

Pyro Status

Oxi Status